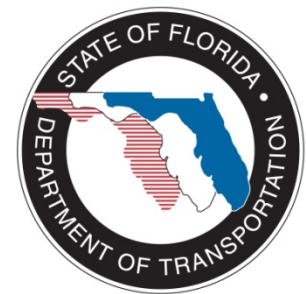


# Florida's Pilot Project

NAHBA 2009



# Some History

- I-75 is major entryway into Florida
- Older Interstate Highway
- Signs constructed prior to HBA
- 1996 Legislature wanted cleanup
- Efforts hampered by signs



 Florida, United States, North America





# Corridor Characteristics

- 140 Miles in Length
- Primarily rural agricultural
- Varying views and landscapes
- 848 Non-conforming sign structures



BIBLE SALE  
EXIT 5

BIBLE SALE  
EXIT 5

EXIT 5



# Acquisition Program

- Purchasing Non-conforming signs
- \$15 Million over 5 years
- Initiated in FY 08/09



# Corridor Study

To identify those areas on the corridor where beautification activities, including removal of non-conforming signs, could be most effective.



# Landscape Areas

1. Wooded pastoral
2. Horse farm pastoral
3. Pine forest
4. Mixed pine/hardwood forest
5. Payne's Prairie (unique eco-system)
6. Heartland urban
7. Rural transitional
8. Corridor nodes

# Priority Schedule

1. Strongly recommended
2. Recommended
3. Neutral
4. Not recommended
5. Strongly not recommended

# The Result

## West Side

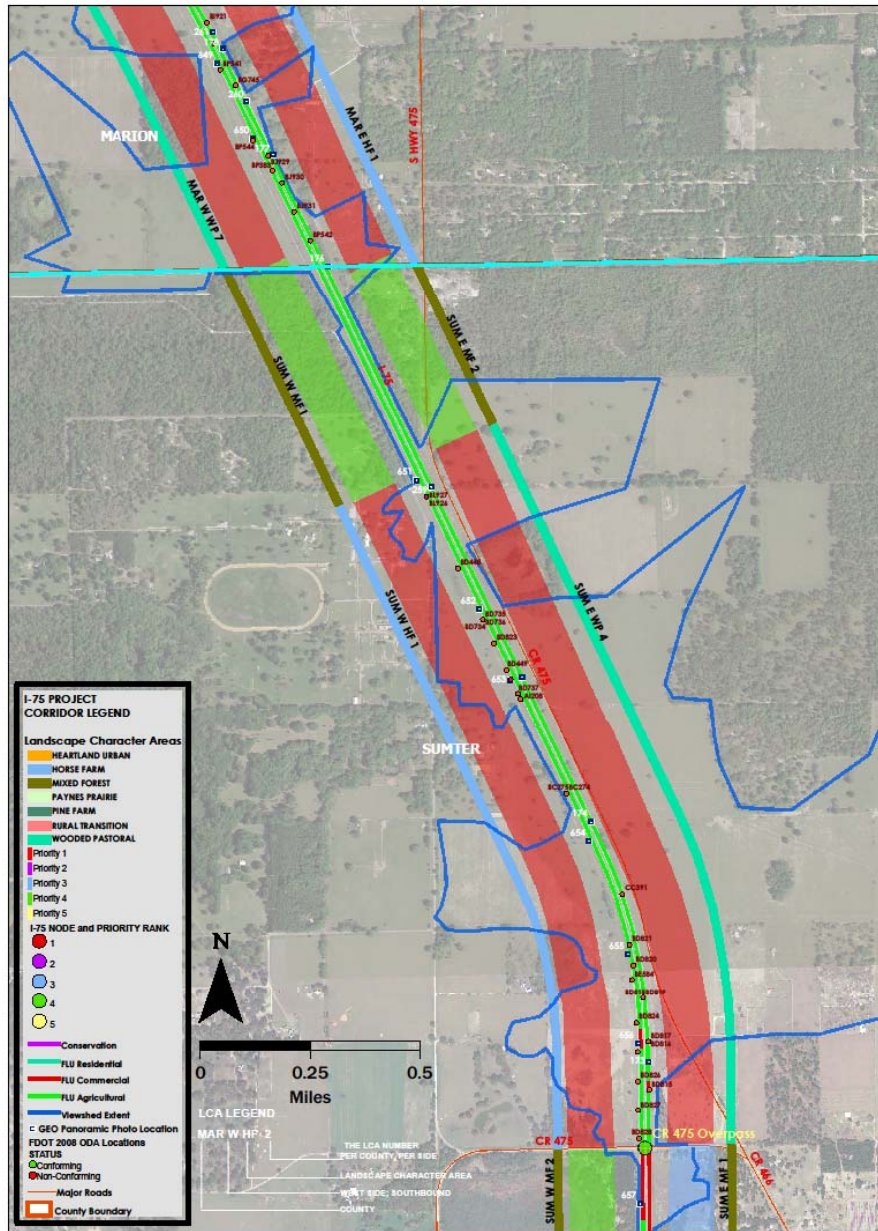
1. 10.2 Miles – 96 Signs
2. 26.0 Miles – 130 Signs
3. 89.5 Miles – 272 Signs
4. 17.9 Miles – 1 Sign
5. 0 Miles – 0 Signs

## East Side

1. 11.3 Miles – 51 Signs
2. 16.0 Miles – 58 Signs
3. 103.0 Miles – 239 Signs
4. 13.3 Miles – 1 Sign
5. 0 Miles – 0 Signs

# Summary

- 63.5 Miles of Priority 1 and 2 areas
  - 335 Non-conforming signs (39.5%)
- 223.7 Miles of Priority 3, 4 and 5 areas
  - 513 Non-conforming signs (60.5%)



**I-75 PROJECT CORRIDOR LEGEND**

**Landscape Character Areas**

- HEARTLAND URBAN
- HORSE FARM
- MIXED FOREST
- PAINES PRAIRIE
- PINE FARM
- RURAL TRANSITION
- WOODED PASTORAL

**PRIORITY**

- Priority 1
- Priority 2
- Priority 3
- Priority 4
- Priority 5

**I-75 NODE and PRIORITY RANK**

- 1
- 2
- 3
- 4
- 5

**FLU**

- Conservation
- Residential
- Commercial
- Agricultural

**Viewshed Edent**

- Viewshed Edent

**Geo Panoramic Photo Location**

**FDOT 2008 ODA Locations STATUS**

- Conforming
- Non-Conforming

**Major Roads**

**County Boundary**

**LCA LEGEND**

THE LCA NUMBER PER COUNTY/FLU SUBC

LANDSCAPE CHARACTER AREA

RIGHT SIDE, SOUTHBOUND

COUNTY

# The Pilot Concept

- Allow rebuild of signs in priority 3 or 4 areas in exchange for removal of signs in priority 1 or 2 areas.

# Removal Schedule

Existing Sign						Rebuilt Sign						Required Removal	
Material	Supports	Facing Size	Lighted	Faces	HAGL	Material	Supports	Facing Size	Lighted	Faces	HAGL	Facing Size	Number
Wood	4	12x48	No	1	12	Steel	1	12x48	No	1	12	12x48	1
Wood	4	12x48	No	1	12	Steel	1	12x48	No	2	12	12x48	2
Wood	4	12x48	No	1	12	Steel	1	12x48	No	2	18	12x48	3
Wood	4	12x48	No	1	12	Steel	1	12x48	Yes	2	18	12x48	4

# Other Features

- Written agreement for each rebuild
- Rebuilt sign would be non-conforming
- Landowner interest must be addressed
  - FDOT would provide funding
- Anticipated 3 year pilot period

# Current Status

- Draft has been approved by FHWA
- 2 Public Meetings held
  - Attended by industry, scenic groups & citizens
  - Comments were pro and con
- Final document to FHWA for approval anticipated 9/01/2009

# Current Status

- **STILL JUST A PROPOSAL**

**QUESTIONS?**

**COMMENTS?**

**QUALMS?**

**QUIBBLES?**

**CONCERNS?**